

**\*MANDATORY SERVICE BULLETIN\*****NUMBER:** SB11-15**REVISION:** 01**DATE:** 10/05/2011**SUBJECT:** CREW SEAT CHAIN PLATE INSPECTION**EFFECTIVITY:**

KODIAK 100 Series Aircraft Serial Numbers: 100-0001 through 100-0054

**SUMMARY:**

It has been found on one aircraft with over 1,000 flight hours that a crack has begun around a nut on the crew seat chain plate (P/N 100-825-1231). Comply with the procedures outlined in the accompanying service bulletin attachment, "Crew Seat Chain Plate Inspection Procedures." If damage is found, contact Quest Customer Service for replacement parts.

**COMPLIANCE:**

This Mandatory Service Bulletin must be complied with on or before the next 100 hr, Annual Inspection, or scheduled maintenance, whichever comes first.

**ATTACHED DOCUMENTS:**

Document #:	Date:	Document Title:
N/A	09/09/2011	Crew Seat Chain Plate Inspection Procedures

**FAA APPROVAL STATUS:**

The resultant instructions attached to this Service Bulletin has demonstrated compliance with all applicable Federal Aviation Regulations and is approved by the Federal Aviation Administration.

**CREDIT AND WARRANTY INFORMATION:**

Quest Aircraft Company will reimburse for the cost of this inspection up to \$63.75. For reimbursement send Quest Aircraft Company a copy of the inspection record, a completed KODIAK Warranty Claim Form, and an invoice that does not exceed the amount listed above.

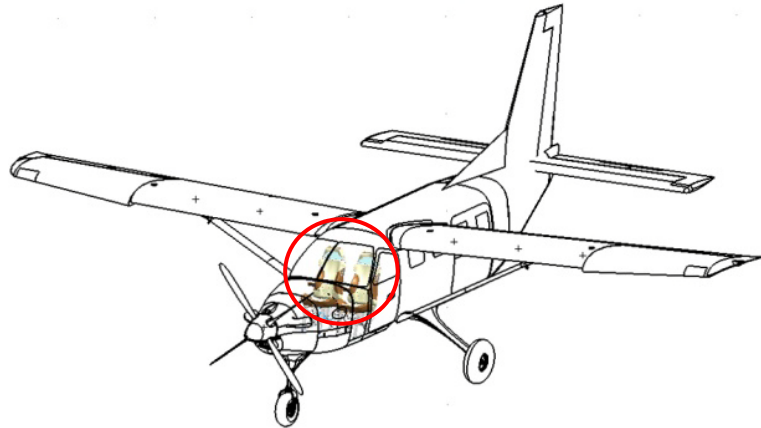
**Quest Customer Service****Service Bulletin: SB11-15****Phone: (208)263-1111 Toll Free: 1(866)263-1112****Email: [Customercare@questaircraft.com](mailto:Customercare@questaircraft.com)****SPECIAL INSTRUCTIONS:**

Service Bulletin SB11-16 must be complied with to prevent possible future damage to the crew seat chain plate, P/N 100-825-1231.

Quest Aircraft Company, LLC  
© Copyright 2011  
All Rights Reserved

No part of this document may be reproduced, copied, transmitted, disseminated, downloaded or stored in any storage medium, for any purpose without the express prior written consent of Quest Aircraft Company, LLC.

**Inspection Area:**



**Estimated Manhours:** 45 Minutes

**Overview:**

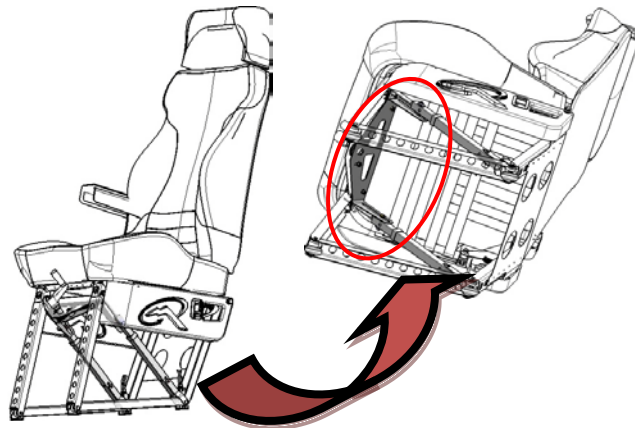
It has been found on one aircraft with over 1,000 flight hours that a crack has started to form around the nut on the crew seat chain plate, as shown on the next page. The damage is caused by users adjusting the seat height beyond its upper limit. (Adjustment arm located on the front of the crew seats between the occupant’s legs.) *Quest Aircraft Company* is mandating a one-time inspection of this bracket to bring special attention to mechanics. This inspection does not change or modify the inspection requirements as defined in the *KODIAK 100 Maintenance Manual, Chapter 5 “Time Limits/Maintenance Checks.”*

Since becoming aware of this issue, *Quest Aircraft Company* has begun working on a change in design to eliminate the potential of future damage. Upon completion of the design and FAA approval, customers will be notified and parts will be available through *Quest Aircraft Customer Service*.

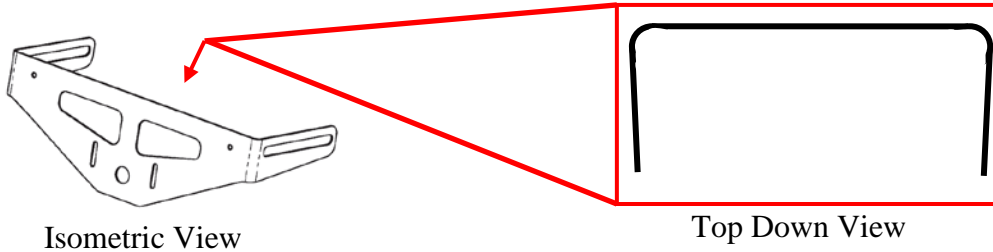
**▲ NOTE ▲**  
The following service instructions are applicable to all Kodiak 100 interior configurations.

**Inspection Instructions:**

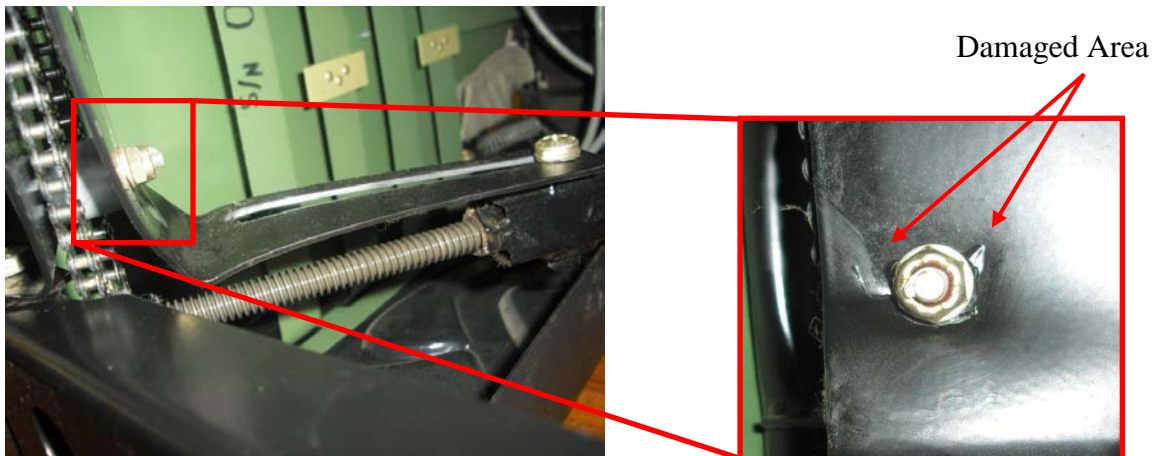
1. Gain access to the bottom of the crew seat.



2. Inspect the Crew Seat Chain Plate (P/N 100-825-1231) for:
  - 2.1. Correct shape (See image below).



- 2.2. Cracking and other deformation/damage (See images below).



**▲ NOTE ▲**

Ensure the inspection area is properly lighted, noise levels are maintained at a minimal level, and proper tools are used to assist in the inspection process.

- 2.3. If brackets are incorrectly bent or cracks are found, the part(s) must be replaced. Contact Quest Aircraft Customer Service to order replacement parts.
  - 2.4. If no damage is found, continue to **Step #3**.
3. Repeat inspection procedure on the other crew seat.
4. Upon completion of all work instructions, record work completed in the appropriate *Kodiak 100 Log Books*.

**▲ NOTE ▲**

*Quest Aircraft Company* is in the process of a design change to eliminate future problems with the crew seat adjustment assembly, and will make that information available to customers after FAA approval.

---END---